

Item	Description	HP Part No.	Qty
1	Heater/Sensor Assembly	05890- 61140	1
2	● Heater, 70 W	19231-60620	1
3	● Contact	1251-1679	2
4	● PRT Assembly	19231-60660	1
5	● Contact	1251-5963	2
6	● Flexible Sleeving (ordered by the inch)	0890- 0737	22
7	Shell Weldment	19251-80570	1
8	Glass Cloth	9300-0713	1
9	Insulator	0340-0686	1
10	Heat Sink	18740-20940	1
11	Shaped Insulation	19251-00020	1
12	Splitter Tube	19251-80520	1
13	Front Ferrule, 1/8-inch brass	0100-0032	1
14	Back Ferrule, 1/8-inch brass	0100-0036	1
15	Tubing Nut, 1/8-inch brass	0100-0058	1
16	Retaining Nut	19251- 20620	1
17	Seal, Annealed	18740-20880	-
18	Flat Washer, Stainless Steel	2190-0701	1
19	Reducing Nut	18740-20800	1
20	Lower Insulation	19243-00060	3
21	Lower Insulation Cover	19243-00070	1
22	Insert Assy	19251-60570	1
23	Septa Retainer	18740-60830	1
24	Insulation	19251- 00120	1
25	O- ring		1
	Viton, High Temp. (Pkg/12)	5180- 4182	-
	Graphite for Split Liner (Pkg/12)	5180- 4168	-
	Graphite for Splitless Liner (Pkg/12)	5180- 4173	-
26	Liner		1
	Split/Splitless (4 mm id)	19251- 60540	-
	Split- Packed (4 mm id)	18740- 60840	-
	Split- Unpacked (4 mm id)	18740- 80190	-
	Splitless (2 ± 0.2 mm id)	18740- 80220	-
	Direct (1.5 ± 0.2 mm id)	18740- 80200	-
27	Septa, Grey (Pkg/144)	5080- 8894	1

Figure 4. Split/Splitless, Split-Only Capillary Inlet (Sheet 1 of 2).

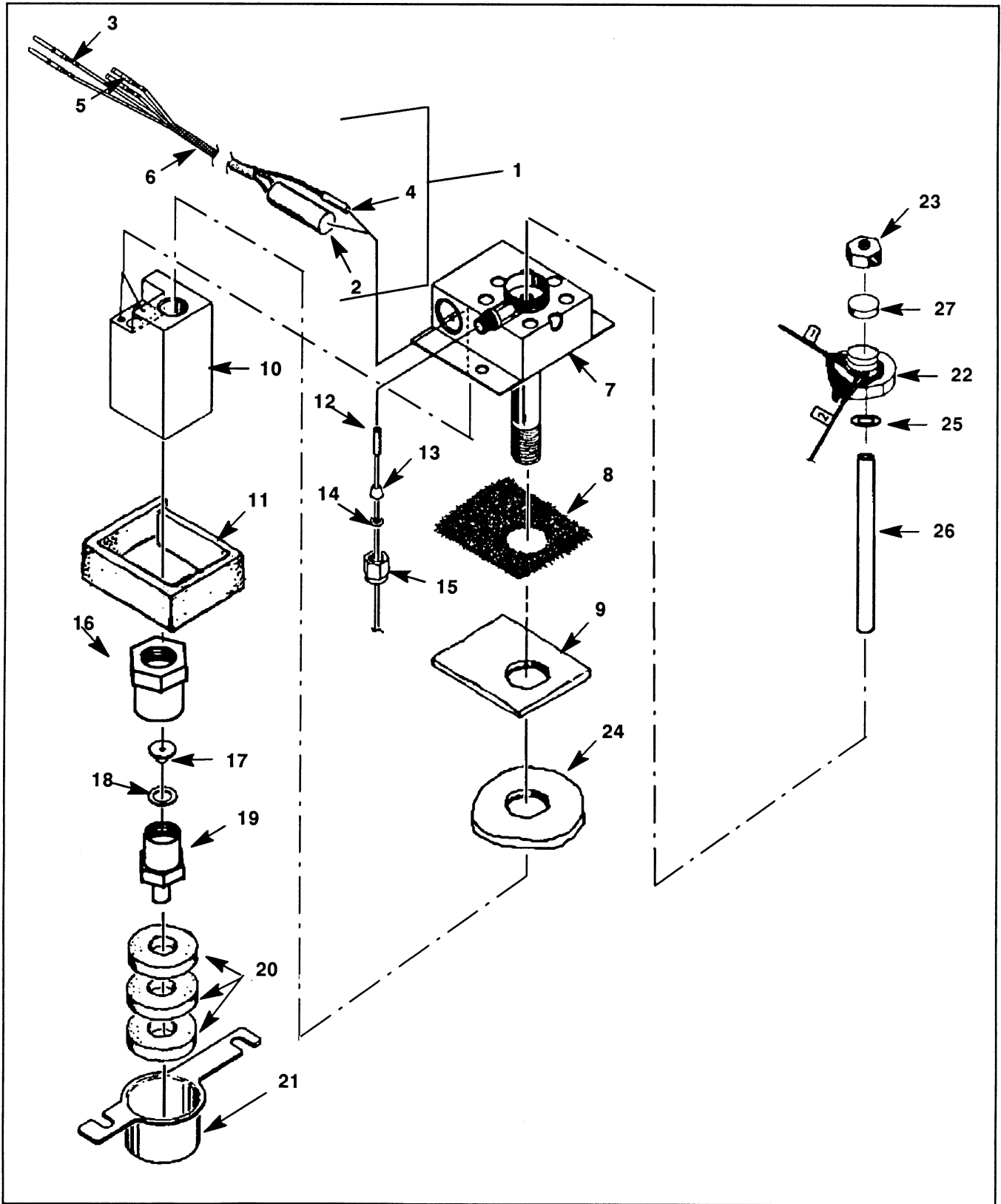


Figure 4. Split/Splitless, Split-Only Capillary Inlet (Sheet 2 of 2).